



# Poppyfield Court

Lings, Northampton

oriordanbond  
SALES & LETTINGS



# Poppyfield Court

Lings

NN3 8NG

GUIDE PRICE £215,000

A three bedroom end terraced town house, offered to the market with no upper chain, within walking distance to local schools and Weston Favell Shopping Centre.

Accommodation over three floors comprises entrance hall, cloakroom/WC, kitchen/dining room, first floor landing, sitting room, double bedroom. second floor landing, two further double bedrooms and a newly fitted shower room. Outside is an enclosed low maintenance rear garden and a driveway to the front providing off road parking. Further benefits include uPVC double glazing and gas radiator heating. (B/1215/M)

### Additional information

- Council Tax Band: A
- Energy Efficiency Rating: D

### Viewing

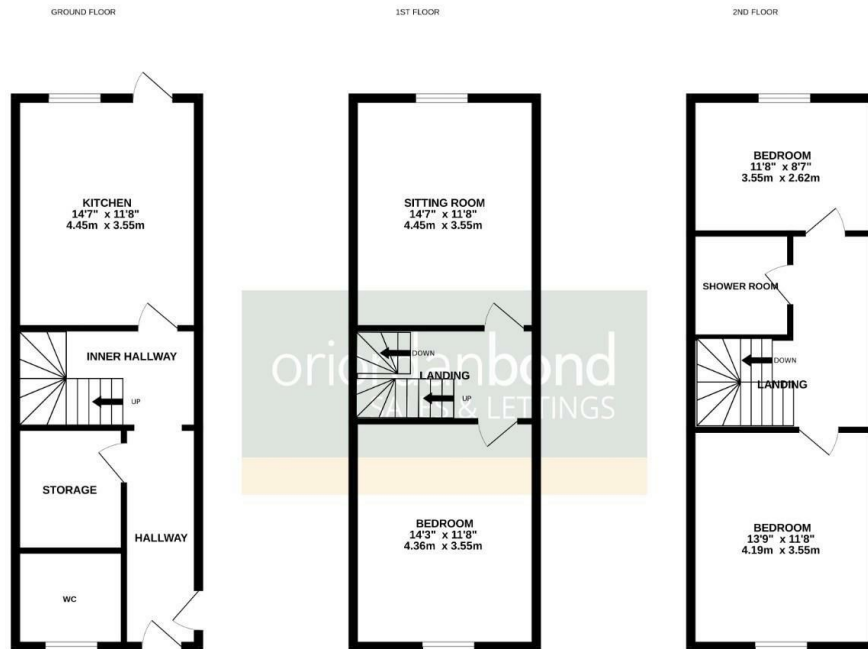
Viewing strictly by appointment – details below

### Disclaimer

O’Riordan Bond Estate Agents Limited has not tested apparatus, equipment, fittings or services and so cannot verify they are in working order. The buyer is advised to obtain verification from their solicitor or surveyor.

O’Riordan Bond Weston Favell Sales  
01604 784007

westonfavell@oriordanbond.co.uk



TOTAL FLOOR AREA: 1215 sq.ft. (112.9 sq.m.) approx.  
Whilst every attempt has been made to ensure the accuracy of the floorplan contained here, measurements of doors, windows, rooms and any other items are approximate and no responsibility is taken for any error, omission or mis-statement. This plan is for illustrative purposes only and should be used as such by any prospective purchaser. The services, systems and appliances shown have not been tested and no guarantee as to their operability or efficiency can be given.  
Made with Metropix 03/2020